

# Port Activity App

Can we make linesmen go lean  
and tugs tweet?

**Linda Astner**  
**Manager Port Authority**

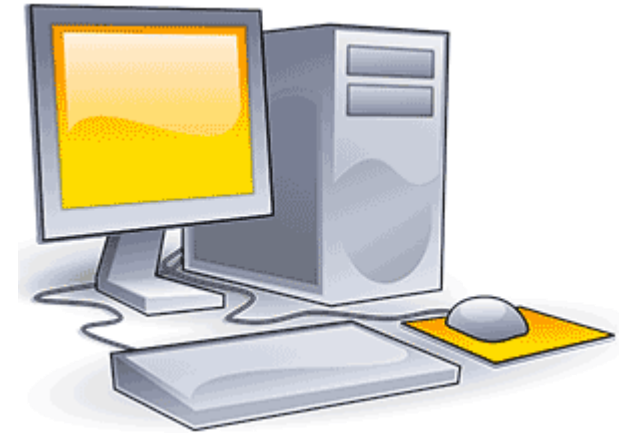


**Gävle Hamn**







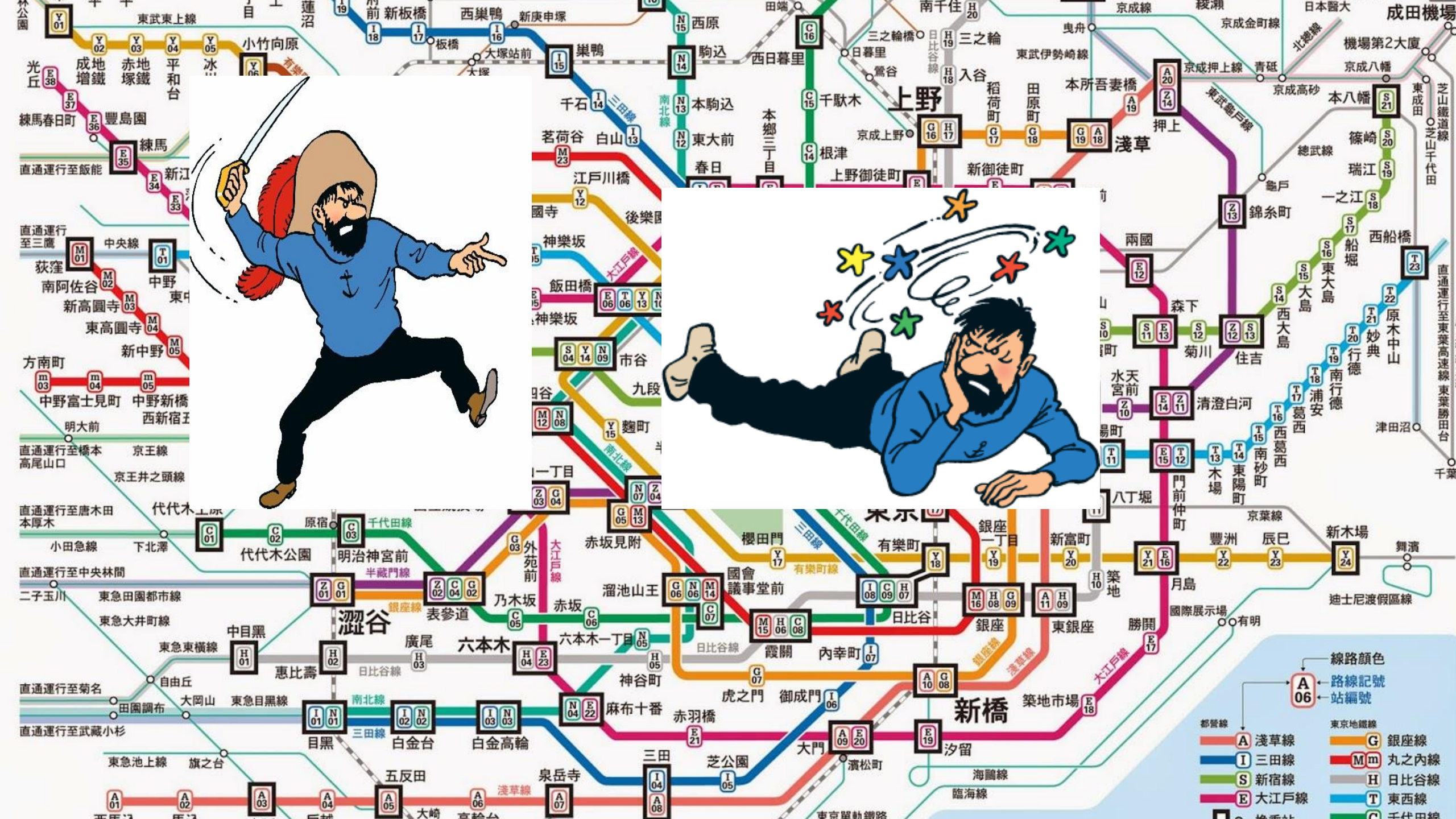


**Port call process 2016**  
**One man**  
**Office hours**



**Port call process 2017**  
**Traffic management 24/7**









EUROPEAN UNION  
European Regional Development Fund



**Interreg**  
Central Baltic

### Partners:

Swedish Maritime Administration (SMA)  
Port of Rauma, Finland  
Port of Gävle, Sweden  
Satakunta University of Applied Sciences,  
Rauma (SAMK)  
Finnish Transport Agency (FTA)

### Objectives:

- Goods flow optimization in Port of Rauma and Port of Gävle
- Passenger flow optimization between Stockholm and Turku
- Making the pilot ordering system in Gävle more efficient

**EFFICIENT FLOW**  
**2018-2020**

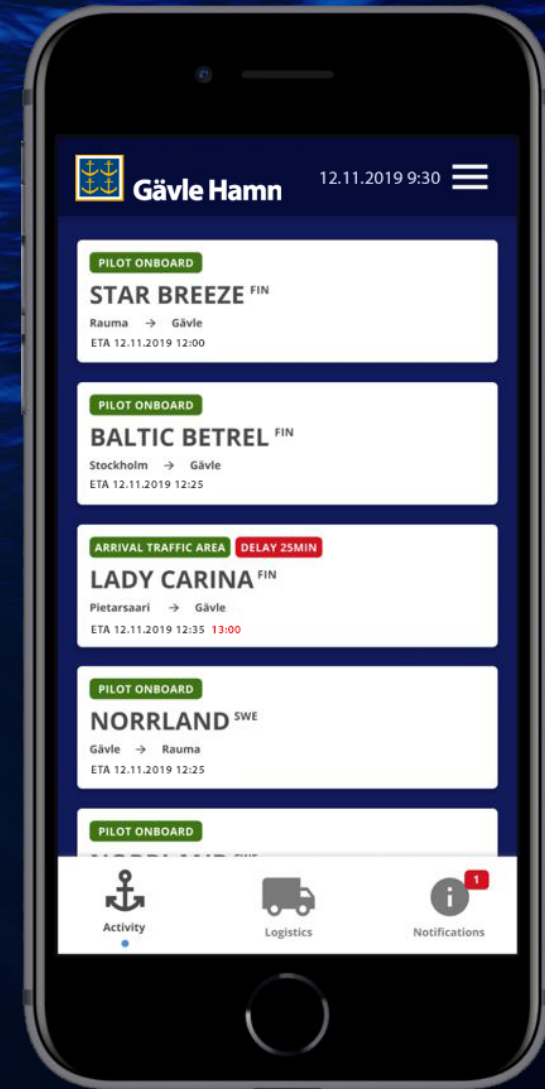
- The purpose is sharing of information and time stamps (estimated and actual) during a port call
- Available for all port actors and ship
- Mobile first
- Web page
- Available for terminal systems

## PORT FLOW OPTIMIZATION



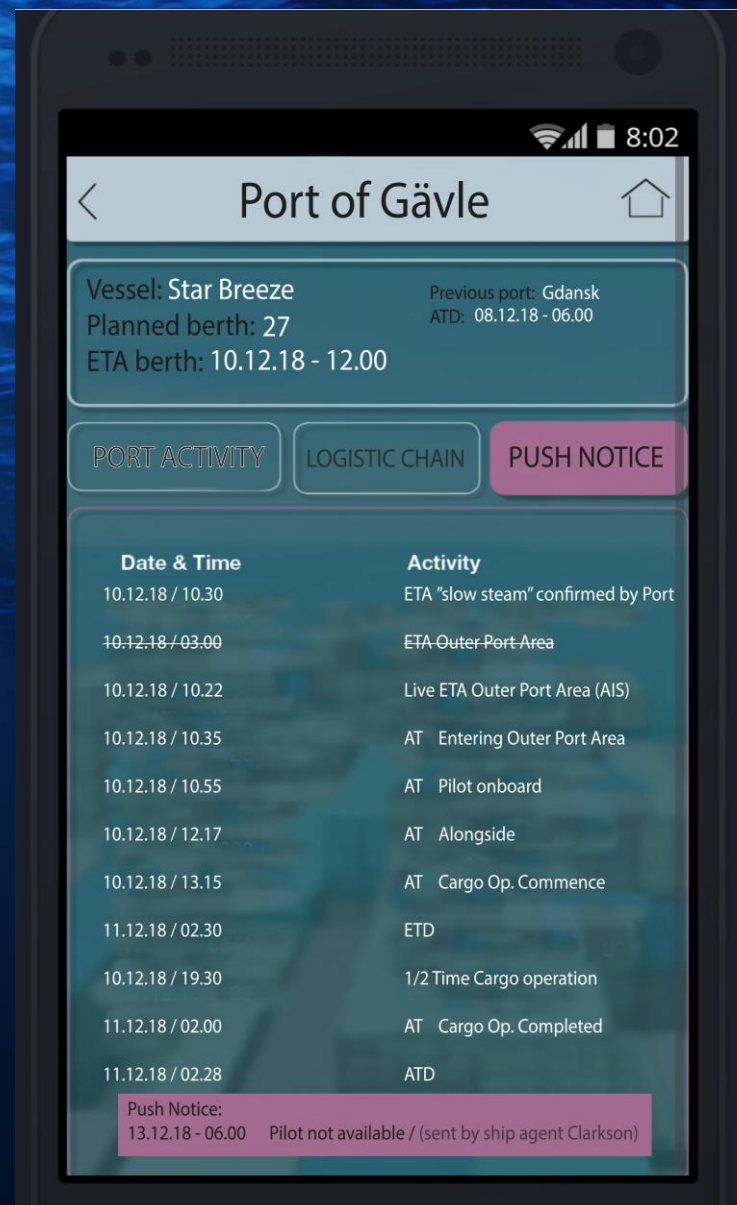


- All ships calling the port will be displayed in the app
- Data collection from multiple sources
  - Ship info (STM, "mail")
  - AIS Live
  - MSW
  - Pilot System
  - Port Info System
  - Terminal System
  - Manual Input
  - Push Notices



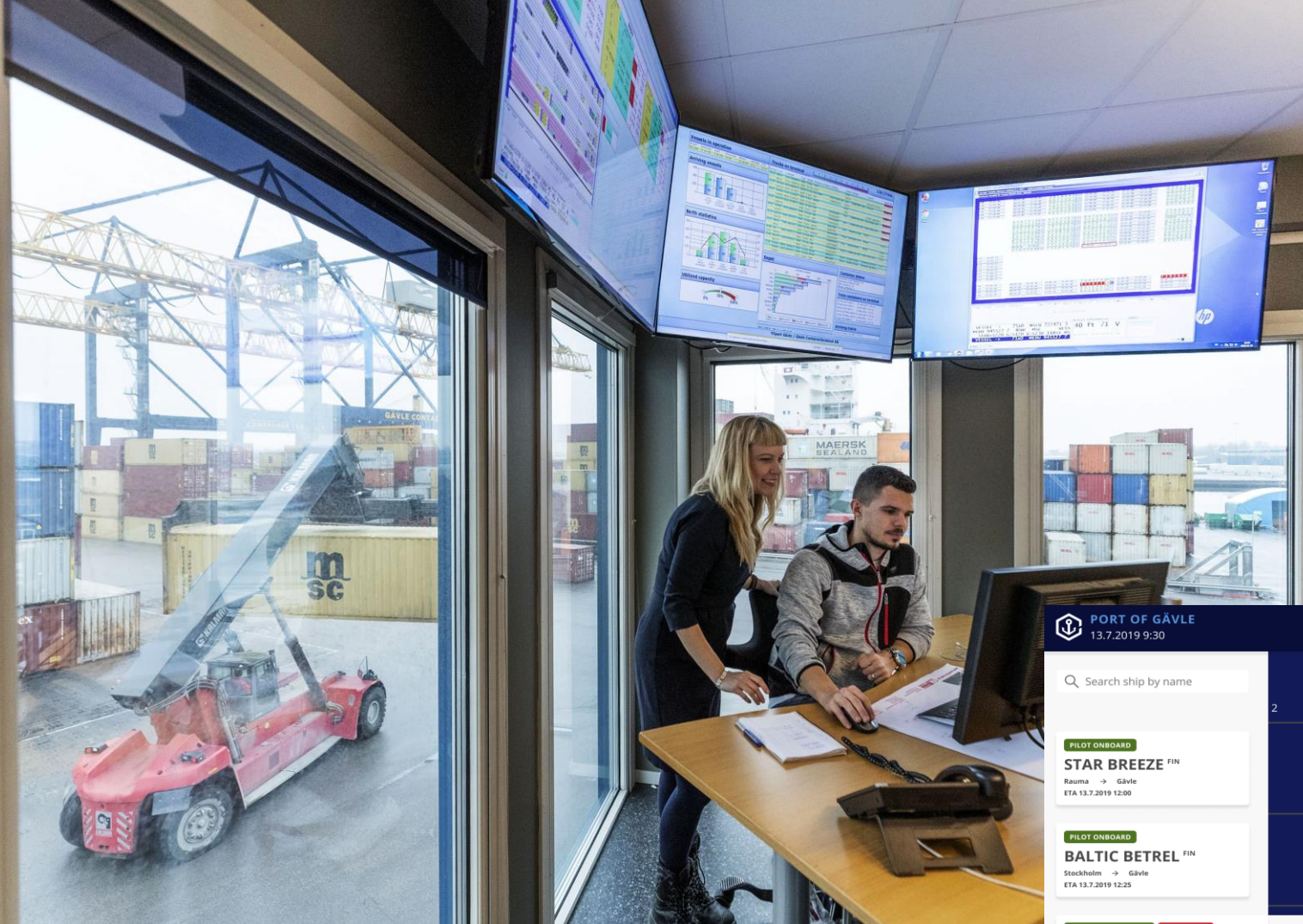
## PORT ACTIVITY APP





ESTIMATED AND ACTUAL TIMES





 **PORT OF GÄVLE**  
13.7.2019 9:30

🔍 Search ship by name

**PILOT ONBOARD**

**STAR BREEZE** <sup>FIN</sup>

Rauma → Gävle  
ETA 13.7.2019 12:00

**PILOT ONBOARD**

**BALTIC BETREL** <sup>FIN</sup>

Stockholm → Gävle  
ETA 13.7.2019 12:25

**ARRIVAL TRAFFIC AREA** **DELAY 25MIN**

**LADY CARINA** <sup>FIN</sup>

Pietarsaari → Gävle  
ETA 13.7.2019 12:25 → **13:00**

**TYPE** Bulk Carrier

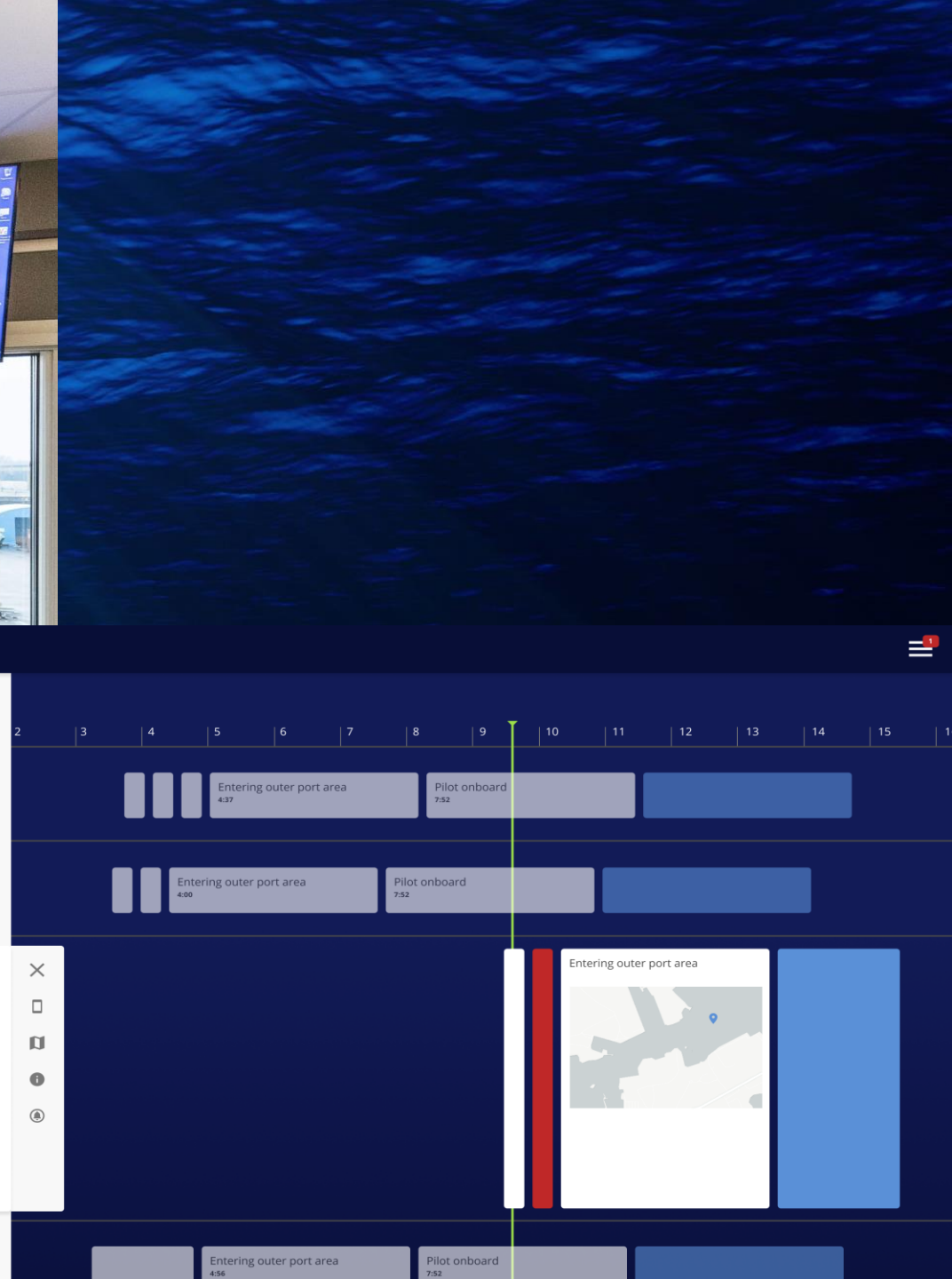
**STATUS** At Gävle

**SIZE** 230m x 37m

**DROUGHT** 61dm

**PILOT ONBOARD**

**NORRLAND** <sup>SWE</sup>



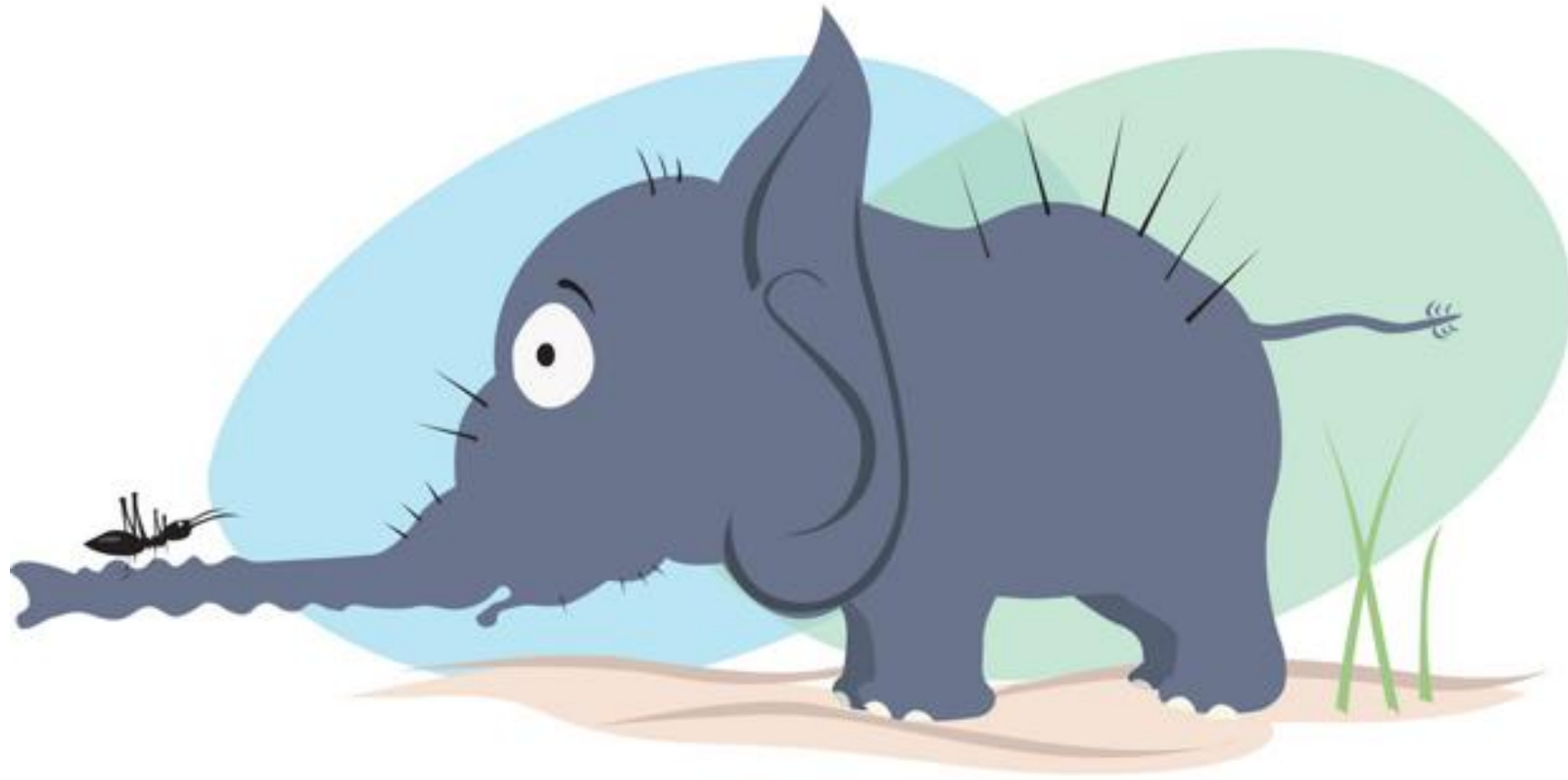


Port Activity and STM sync. → Just-in-time Port Calls and Cargo flow



AGREEMENT WITH THE INDUSTRY





**SIZE MATTERS**









**THANK YOU!**



**Gävle Hamn**